



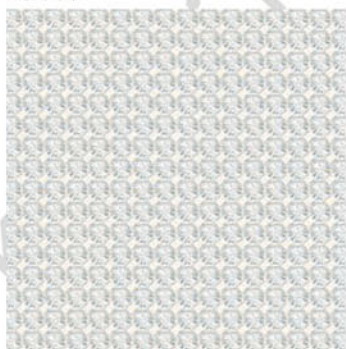
## 19 KRISTĀLA siets

Kristāla Siets ir plūstoši kustīgs metāla nesējmateriāls, kurā iestrādāti atsevišķi kristāli. Produkts ir pieejams plašā akmeņu un ietvaru krāsu asortimentā Hotfix (ar Termolīmi) versijā, kuru var pielīmēt ar karstuma palīdzību, vai NO Hotfix (bez Termolīmes) versijā, kuru var piešūt ar rokām vai šujmašīnu. Ir iespējami pielāgojami risinājumi, un klienti var izvēlēties īpašus motīvus līdz deviņu krāsu kombinācijās. Kristāla Siets ir piemērots daudziem segmentiem, kā piemēram, tekstila un aksesuāru segmentiem.

## Artikula Skaidrojumi - Loksnes

<<<

40 000



SH 100

S ~500x200

SS PP 21

M 1 loksne (SH)

100%

40 000	SH	S	SS	M	100%
Artikuls	Loksne	Loksnes izmērs m	Akmeņu izmērs	Minimālais pasūtījuma daudzums loksnes (SH)	Attēlošanas izmērs %

## Pasūtīšanas Paraugs & Produkta Daudzveidības Skaidrojums

<<<

40 000	100	082	001	NOHF
Artikuls	Loksne	Ietvara krāsa	Kristālu krāsa	Termopārneses tehnoloģija
	100 Standarta Loksne (~500x200 mm)	012 Black* 081 Gold** 082 Silver**	Skatīt attiecīgo produkta matricu visu pieejamo kodu uzziņai.	HF Ar Termolimi NOHF Bez Termolimes
		Tikai Metāliskajam Kristāla Sietam (Metallisée): 011 Nougat* 014 Platinum*		

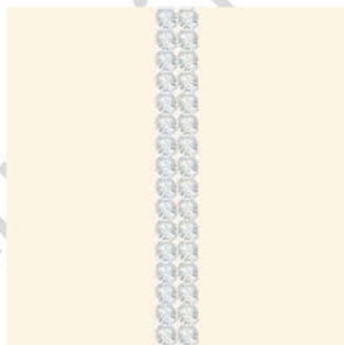
\* Alu (alumiņijs): 011 Nougat, 012 Black, 014 Platinum

\*\*Brass (misiņš): 081 Gold, 082 Silver

## Artikula Skaidrojums - Rindas

<<<

40 001



R 002-033

SS PP 21

M 10 M

100%

40 001	R	SS	M	100%
Artikuls	Rindu skaits	Akmeņu izmērs	Minimālais pasūtījuma daudzums metros (M)	Attēlojuma izmērs %
	Šis artikuls ir pieejams platumā no 2 līdz 33 rindām.			

## Pasūtīšanas Paraugs & Produkta Daudzveidības Skaidrojums

<<<

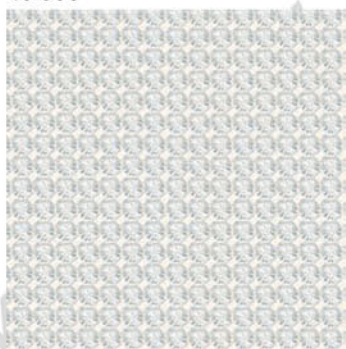
40 001	002	082	001	HF
Artikuls	3-ciparu rindu skaita kods	Ietvara krāsa	Kristālu krāsa	Termopārneses tehnoloģija
		012 Black* 081 Gold** 082 Silver**	Skatīt attiecīgo produkta matricu visu pieejamo kodu uzziņai.	HF Ar Termolimi NOHF Bez Termolimes

Tikai Metāliskajam Kristāla Sietam (Metallisée):  
011 Nougat\*  
014 Platinum\*

\* Alu (alumiņijs): 011 Nougat, 012 Black, 014 Platinum

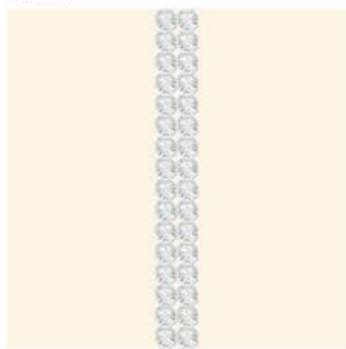
\*\*Brass (misiņš): 081 Gold, 082 Silver

40 000

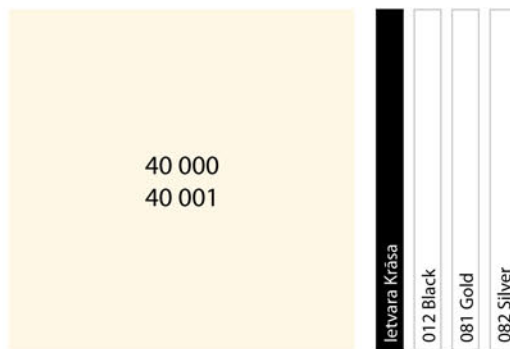


SH 100	
S ~500x200	
SS PP 21	
M 1 SH	100%

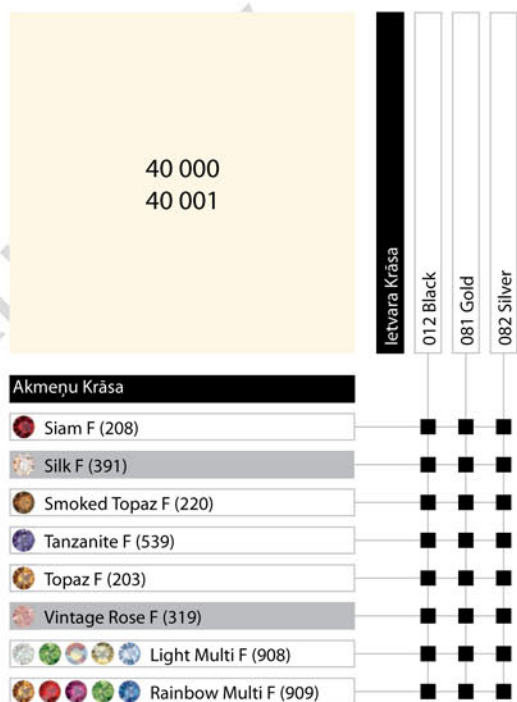
40 001



R 002-033	
SS PP 21	
M 10 M	100%



Ietvara Krāsa		012 Black	081 Gold	082 Silver
Akmeņu Krāsa				
Crystal F (001)		■	■	■
Crystal AB F (001 AB)		■	■	■
Crystal Copper F (001 COP)		■	■	■
Crystal Dorado F (001 DOR)		■	■	■
Crystal Golden Shadow F (001 GSHA)		■	■	■
Crystal Metallic Blue F (001 METBL)		■	■	■
Crystal Moonlight F (001 MOL)		■	■	■
Crystal Silver Shade F (001 SSHA)		■	■	■
Jet (280)		■	■	■
Jet Hematite (280 HEM)		■	■	■
Jet Nut (280 NUT)		■	■	■
Amethyst F (204)		■	■	■
Aquamarine F (202)		■	■	■
Black Diamond F (215)		■	■	■
Blue Zircon F (229)		■	■	■
Caribbean Blue Opal F (394)		■	■	■
Dark Red Coral F (396)		■	■	■
Emerald F (205)		■	■	■
Fuchsia F (502)		■	■	■
Jonquil F (213)		■	■	■
Khaki F (550)		■	■	■
Light Amethyst F (212)		■	■	■
Light Colorado Topaz F (246)		■	■	■
Light Grey Opal F (383)		■	■	■
Light Peach F (362)		■	■	■
Light Rose F (223)		■	■	■
Light Sapphire F (211)		■	■	■
Light Siam F (227)		■	■	■
Mint Alabaster F (397)		■	■	■
Mocca F (286)		■	■	■
Pacific Opal F (390)		■	■	■
Padparadscha F (542)		■	■	■
Palace Green Opal F (393)		■	■	■
Peridot F (214)		■	■	■
Purple Velvet F (277)		■	■	■
Rose F (209)		■	■	■
Rose Water Opal F (395)		■	■	■
Sand Opal F (287)		■	■	■
Sapphire F (206)		■	■	■



Pieejamās Ietvaru Krāsas

<<<

Standarta Kristāla Siets ir pieejams ar melnu, zelta un sudraba krāsas Ietvariem. Skatīt attiecīgo produkta matricu visu iespēju uzziņai.



012 Melns



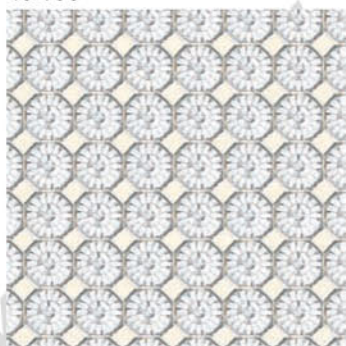
081 Zelta



082 Sudraba

kristali.lv

40 100

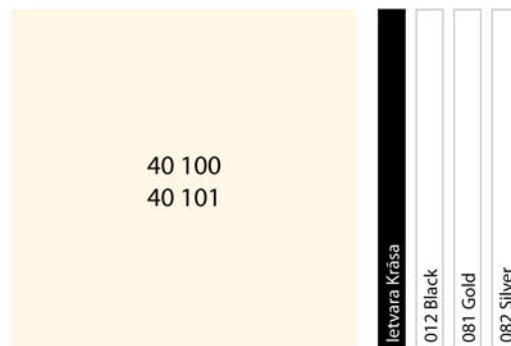


SH 100	
S ~500x200	
SS SS 24	
M 1 SH	100%

40 101



R 002-018	
SS SS 24	
M 10 M	100%



Ietvara Krāsa		012 Black	081 Gold	082 Silver
Akmeņu Krāsa				
Crystal F (001)		■	■	■
Crystal AB F (001 AB)		■	■	■
Crystal Copper F (001 COP)		■	■	■
Crystal Golden Shadow F (001 GSHA)		■	■	■
Crystal Silver Shade F (001 SSHA)		■	■	■
Jet (280)		■	■	■
Jet Hematite (280 HEM)		■	■	■
Amethyst F (204)		■	■	■
Aquamarine F (202)		■	■	■
Black Diamond F (215)		■	■	■
Emerald F (205)		■	■	■
Fuchsia F (502)		■	■	■
Light Amethyst F (212)		■	■	■
Light Colorado Topaz F (246)		■	■	■
Light Peach F (362)		■	■	■
Light Rose F (223)		■	■	■
Light Sapphire F (211)		■	■	■
Light Siam F (227)		■	■	■
Padparadscha F (542)		■	■	■
Peridot F (214)		■	■	■
Rose F (209)		■	■	■
Sapphire F (206)		■	■	■
Siam F (208)		■	■	■
Silk F (391)		■	■	■
Smoked Topaz F (220)		■	■	■
Tanzanite F (539)		■	■	■
Topaz F (203)		■	■	■

Pieejamās Ietvaru Krāsas

Kristāla Siets - XL ir pieejams ar melnas, zelta un sudraba krāsas Ietvariem. Skatīt attiecīgo produkta matricu visu iespēju uzziņai.



012 Melns



081 Zelta



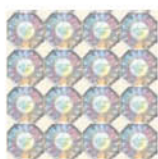
082 Sudraba

Pieejamās Akmeņu Krāsās & Pārklājuma Efekti

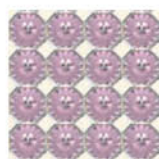
<<<



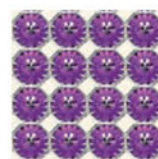
Crystal F  
(001)



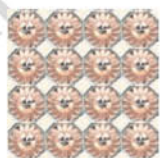
Crystal Aurore Boreale F  
(001 AB)



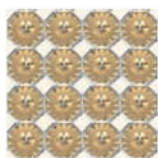
Light Amethyst F  
(212)



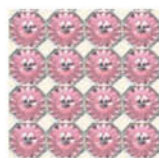
Amethyst F  
(204)



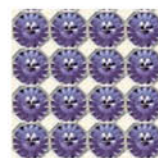
Silk F  
(391)



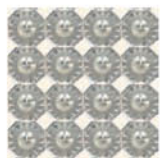
Crystal Golden Shadow F  
(001 GSHA)



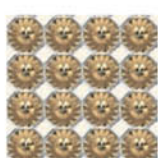
Light Rose F  
(223)



Tanzanite F  
(539)



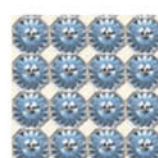
Crystal Silver Shade F  
(001 SSHA)



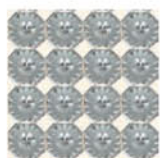
Light Colorado  
Topaz F (246)



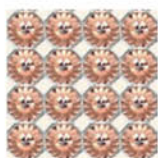
Rose F  
(209)



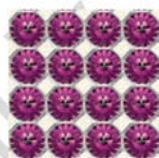
Light Sapphire F  
(211)



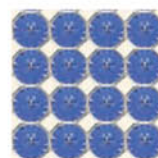
Black Diamond F  
(215)



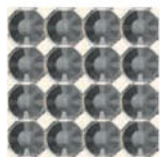
Light Peach F  
(362)



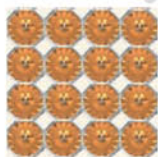
Fuchsia F  
(502)



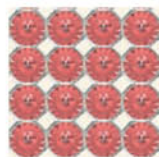
Sapphire F  
(206)



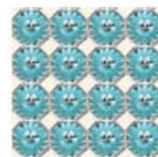
Jet Hematite  
(280 HEM)



Topaz F  
(203)



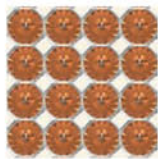
Padparadscha F  
(542)



Aquamarine F  
(202)



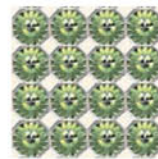
Jet  
(280)



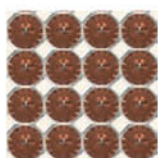
Crystal Copper F  
(001 COP)



Light Siam F  
(227)



Peridot F  
(214)



Smoked Topaz F  
(220)



Siam F  
(208)

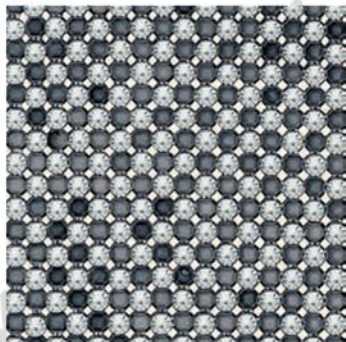


Emerald F  
(205)



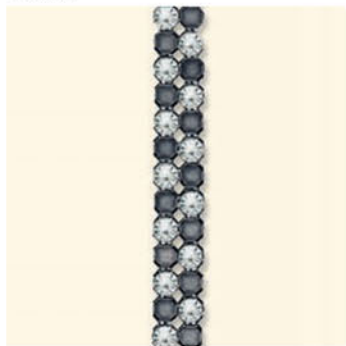
# Kristāla Siets

40 200



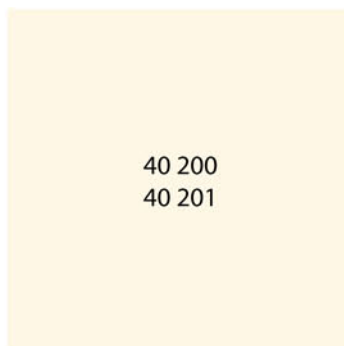
SH 100	
S ~500x200	
SS PP 21	
M 1 SH	100%

40 201



R 002-033	
SS PP 21	
M 10 M	100%

# Metāliskais Kristāla Siets (Metallisée)



40 200  
40 201

letvara Krāsa					
011 Nougat					
012 Black					
014 Platinum					
081 Gold					
082 Silver					

## Akmeņu Krāsa

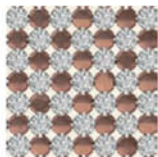
Crystal F (001)					
Crystal AB F (001 AB)					
Crystal Copper F (001 COP)					
Crystal Dorado F (001 DOR)					
Crystal Golden Shadow F (001 GSHA)					
Crystal Moonlight F (001 MOL)					
Crystal Metallic Blue F (001 METBL)					
Crystal Silver Shade F (001 SSHA)					
Jet (280)					
Jet Hematite (280 HEM)					
Jet Nut (280 NUT)					
Amethyst F (204)					
Aquamarine F (202)					
Black Diamond F (215)					
Blue Zircon F (229)					
Caribbean Blue Opal F (394)					
Dark Red Coral F (396)					
Emerald F (205)					
Fuchsia F (502)					
Jonquil F (213)					
Khaki F (550)					
Light Amethyst F (212)					
Light Colorado Topaz F (246)					
Light Grey Opal F (383)					
Light Peach F (362)					
Light Rose F (223)					
Light Sapphire F (211)					
Light Siam F (227)					
Mint Alabaster F (397)					
Mocca F (286)					
Pacific Opal F (390)					
Padparadscha F (542)					
Palace Green Opal F (393)					
Peridot F (214)					
Purple Velvet F (277)					
Rose F (209)					
Rose Water Opal F (395)					
Sand Opal F (287)					
Sapphire F (206)					

40 200 40 201		Ietvara Krāsa	011 Nougat	012 Black	014 Platinum	081 Gold	082 Silver
Akmeņu Krāsa							
	Siam F (208)	■	■	■	■	■	■
	Silk F (391)	■	■	■	■	■	■
	Smoked Topaz F (220)	■	■	■	■	■	■
	Tanzanite F (539)	■	■	■	■	■	■
	Topaz F (203)	■	■	■	■	■	■
	Vintage Rose F (319)	■	■	■	■	■	■
	Light Multi F (908)	■	■	■	■	■	■
	Rainbow Multi F (909)	■	■	■	■	■	■

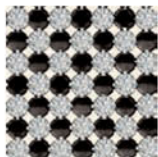
Pieejamās Ietvaru Krāsas

<<<

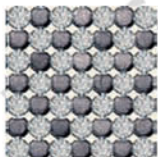
Metāliskais Kristāla Siets ir pieejams piecu dažādu krāsu Ietvaros. Skatīt attiecīgo produkta matricu visu iespēju uzziņai.



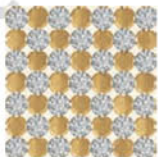
011 Riekstu



012 Melns



014 Platīna



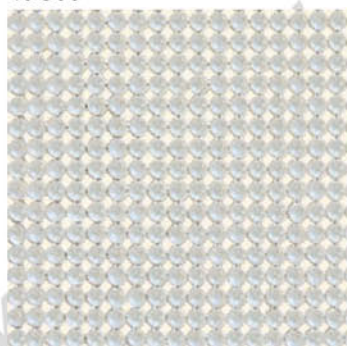
081 Zelta



082 Sudraba

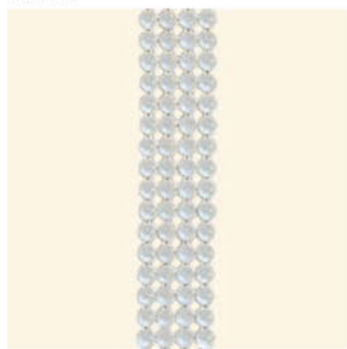
kristali.lv

40 300



SH 100	
S ~500x200	
SS 2.7 mm	
M 1 SH	100%

40 301



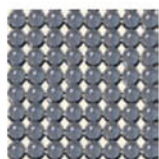
R 004-033	
SS 2.7 mm	
M 10 M	100%

40 300		Ietvara Krāsa		
40 301		012 Black	081 Gold	082 Silver
Akmeņu Krāsa				
Crystal (001)		■	■	■
Jet (280)		■	■	■
Black Diamond (215)		■	■	■
Blue Zircon (229)		■	■	■
Jonquil (213)		■	■	■
Lavender (240)		■	■	■
Light Amethyst (212)		■	■	■
Light Azore (361)		■	■	■
Light Rose (223)		■	■	■
Light Siam (227)		■	■	■
Silk (291)		■	■	■
Topaz (203)		■	■	■
White Opal (234)		■	■	■

Pieejamās Ietvaru Krāsas

<<<

Kristāla Pērļu Siets ir pieejams ar melnu, zelta un sudraba krāsas Ietvariem. Skatīt attiecīgo produkta matricu visu iespēju uzziņai.



012 Melns



081 Zelta



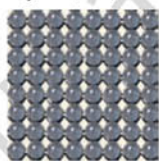
082 Sudraba

Pieejamās Akmeņu Krāsas un Pārklājuma Efekti

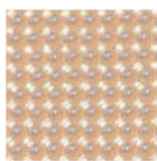
<<<

Kristāla Pērļu Siets ir pieejams ar melnas, zelta un sudraba krāsas ietvariem. Atkarībā no ietvara krāsas, mainās arī pērļu krāsa.

Crystal (001)



012 Black

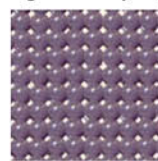


081 Gold

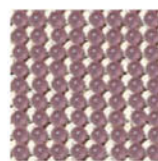


082 Silver

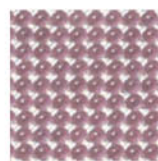
Light Amethyst (212)



012 Black



081 Gold

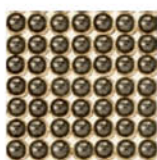


082 Silver

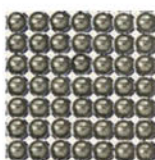
Black Diamond (215)



012 Black

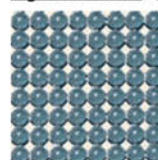


081 Gold



082 Silver

Light Azore (361)



012 Black

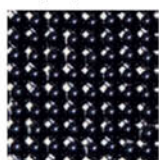


081 Gold

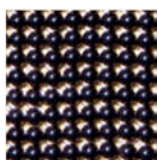


082 Silver

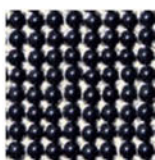
Jet (280)



012 Black

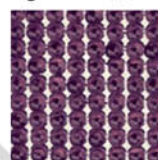


081 Gold

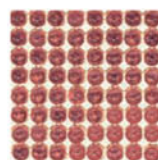


082 Silver

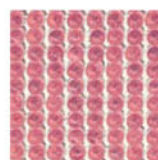
Light Rose (223)



012 Black

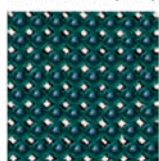


081 Gold

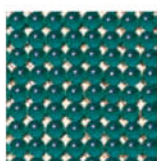


082 Silver

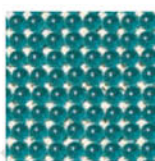
Blue Zircon (229)



012 Black

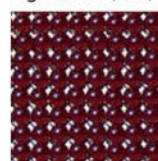


081 Gold

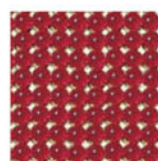


082 Silver

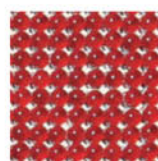
Light Siam (227)



012 Black



081 Gold

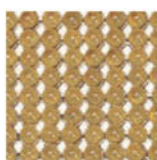


082 Silver

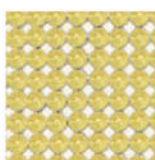
Jonquil (213)



012 Black

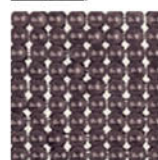


081 Gold

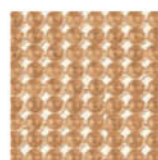


082 Silver

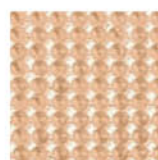
Silk (391)



012 Black

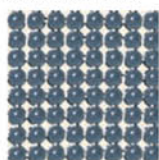


081 Gold

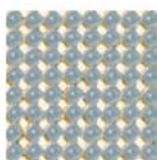


082 Silver

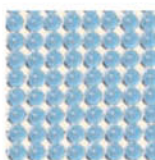
Lavender (240)



012 Black



081 Gold

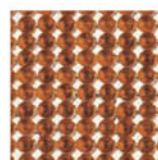


082 Silver

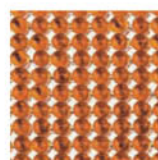
Topaz (203)



012 Black

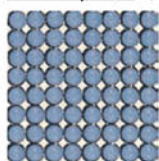


081 Gold



082 Silver

White Opal (234)



012 Black



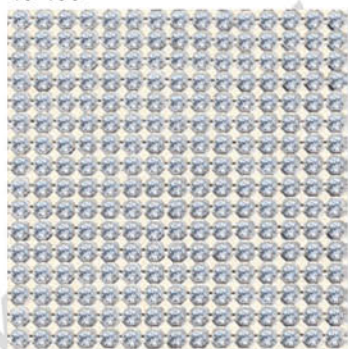
081 Gold



082 Silver

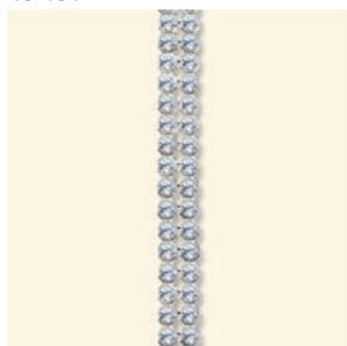
Klasiskās Krāsas  
Ekskluzīvās Krāsas

40 400

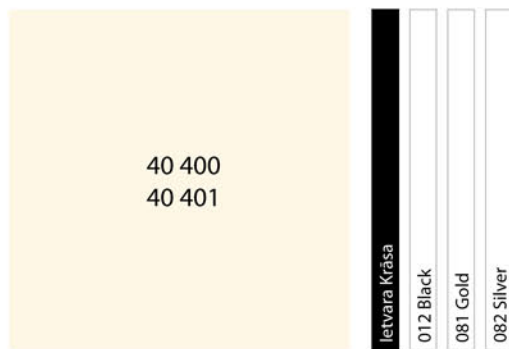


SH	100	
S	~500x200	
SS	PP 14	
M	1 SH	100%

40 401



R	002-033	
SS	PP 14	
M	10 M	100%



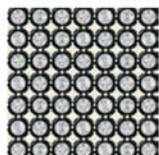
Akmeņu Krāsa

Crystal F (001)	■	■	■
Crystal AB F (001 AB)	■	■	■
Crystal Copper F (001 COP)	■	■	■
Crystal Dorado F (001 DOR)	■	■	■
Crystal Golden Shadow F (001 GSHA)	■	■	■
Crystal Metallic Blue F (001 METBL)	■	■	■
Crystal Moonlight F (001 MOL)	■	■	■
Crystal Silver Shade F (001 SSHA)	■	■	■
Jet (280)	■	■	■
Jet Hematite (280 HEM)	■	■	■
Jet Nut (280 NUT)	■	■	■
Amethyst F (204)	■	■	■
Aquamarine F (202)	■	■	■
Black Diamond F (215)	■	■	■
Blue Zircon F (229)	■	■	■
Caribbean Blue Opal F (394)	■	■	■
Dark Red Coral F (369)	■	■	■
Emerald F (205)	■	■	■
Fuchsia F (502)	■	■	■
Jonquil F (213)	■	■	■
Khaki F (550)	■	■	■
Light Amethyst F (212)	■	■	■
Light Colorado Topaz F (246)	■	■	■
Light Grey Opal F (383)	■	■	■
Light Peach F (362)	■	■	■
Light Rose F (223)	■	■	■
Light Sapphire F (211)	■	■	■
Light Siam F (227)	■	■	■
Mint Alabaster F (397)	■	■	■
Mocca F (286)	■	■	■
Pacific Opal F (390)	■	■	■
Padparadscha F (542)	■	■	■
Palace Green Opal F (393)	■	■	■
Peridot F (214)	■	■	■
Purple Velvet F (277)	■	■	■
Rose F (209)	■	■	■
Rose Water Opal F (395)	■	■	■
Sand Opal F (287)	■	■	■

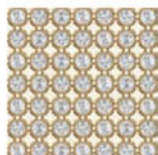
Pieejamās Ietvaru Krāsas

<<<

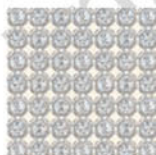
Gaisīgais Kristāla Siets ir pieejams ar melnas, zelta un sudraba krāsas Ietvariem. Skatīt attiecīgo produkta matricu visu iespēju uzziņai.



012 Melns



081 Zelta



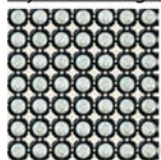
082 Sudraba

Pieejamās Akmeņu Krāsas & Pārklājuma Efekti

<<<

Skatīt visus pieejamos Ietvarus un kristālu krāsas & pārklājuma efektus nākamajās lapās.

Crystal Moonlight F (001 MOL)



012 Black

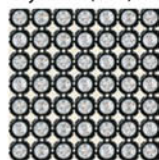


081 Gold



082 Silver

Crystal F (001)



012 Black

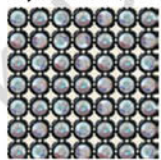


081 Gold

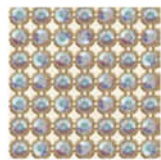


082 Silver

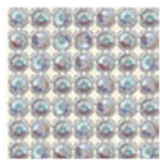
Crystal AB F (001 AB)



012 Black

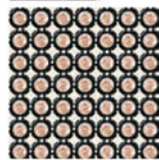


081 Gold

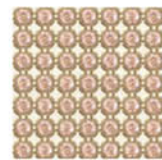


082 Silver

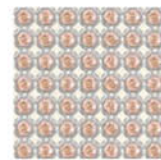
Silk F (391)



012 Black

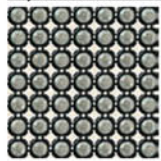


081 Gold



082 Silver

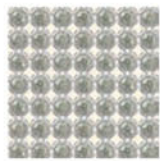
Crystal Silver Shade F (001 SSHA)



012 Black

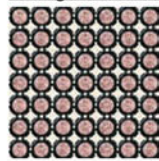


081 Gold

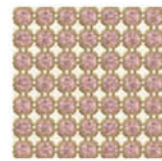


082 Silver

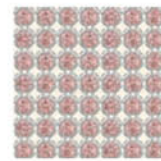
Vintage Rose F (319)



012 Black

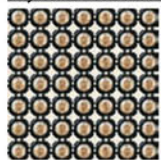


081 Gold

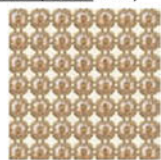


082 Silver

Crystal Golden Shadow F (001 GSHA)



012 Black

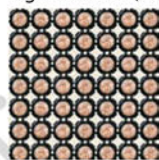


081 Gold

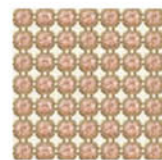


082 Silver

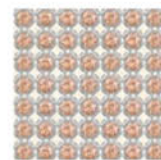
Light Peach F (362)



012 Black

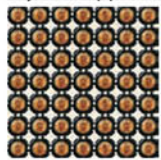


081 Gold

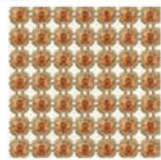


082 Silver

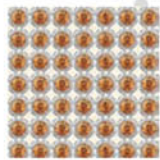
Crystal Copper F (001 COP)



012 Black

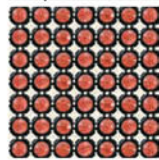


081 Gold

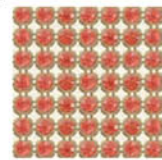


082 Silver

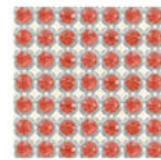
Padparadscha F (542)



012 Black

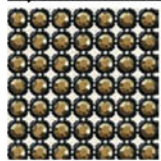


081 Gold



082 Silver

Crystal Dorado F (001 DOR)



012 Black

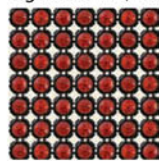


081 Gold

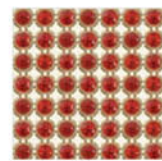


082 Silver

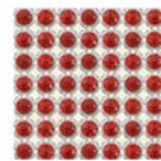
Light Siam F (227)



012 Black

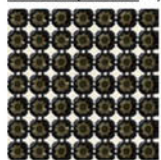


081 Gold

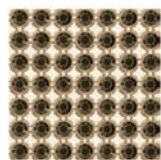


082 Silver

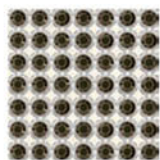
Jet Nut (280 NUT)



012 Black

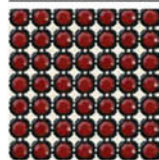


081 Gold

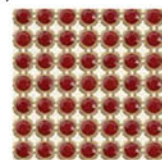


082 Silver

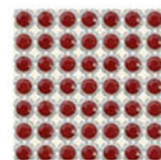
Dark Red Coral F (369)



012 Black



081 Gold

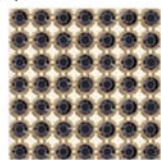


082 Silver

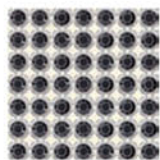
Jet Hematite (280 HEM)



012 Black

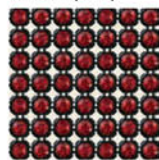


081 Gold

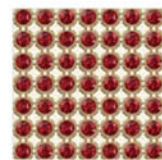


082 Silver

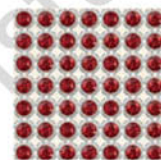
Siam F (208)



012 Black



081 Gold

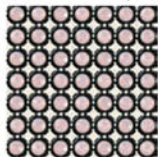


082 Silver

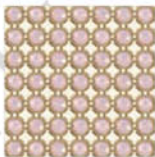
Klasiskās Krāsas / Ekskluzīvās Krāsas

460

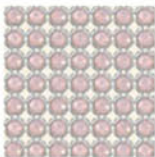
Rose Water Opal F (395)



012 Black

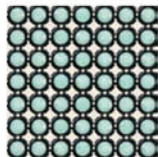


081 Gold

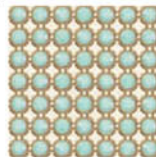


082 Silver

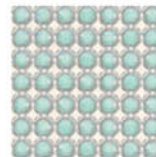
Mint Alabaster F (397)



012 Black

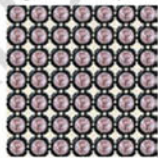


081 Gold

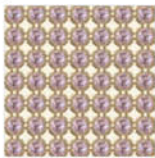


082 Silver

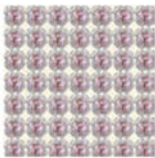
Light Amethyst F (212)



012 Black

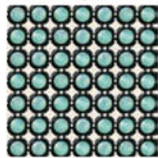


081 Gold

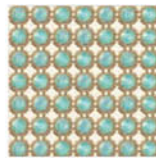


082 Silver

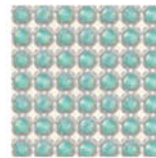
Pacific Opal F (390)



012 Black

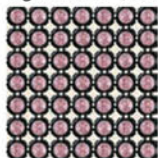


081 Gold

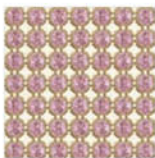


082 Silver

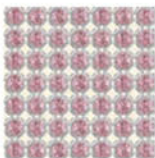
Light Rose F (223)



012 Black

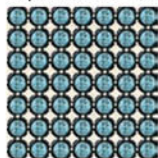


081 Gold

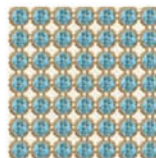


082 Silver

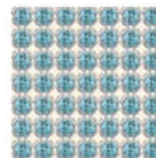
Aquamarine F (202)



012 Black

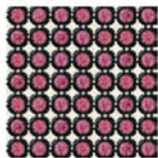


081 Gold

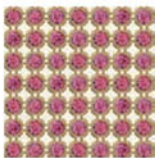


082 Silver

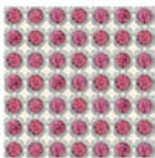
Rose F (209)



012 Black

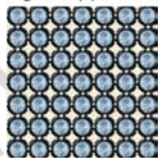


081 Gold

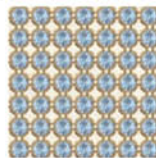


082 Silver

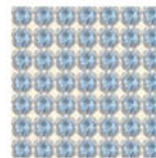
Light Sapphire F (211)



012 Black

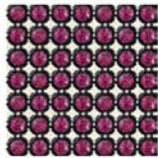


081 Gold

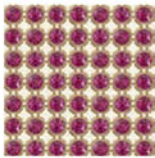


082 Silver

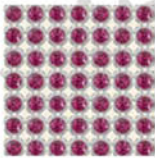
Fuchsia F (502)



012 Black

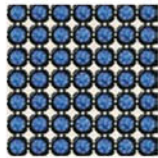


081 Gold

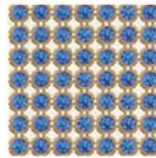


082 Silver

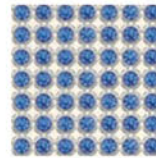
Sapphire F (206)



012 Black

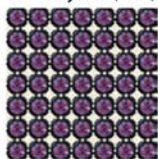


081 Gold



082 Silver

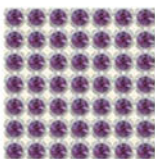
Amethyst F (204)



012 Black

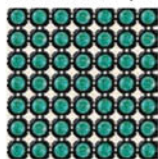


081 Gold

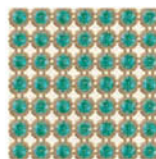


082 Silver

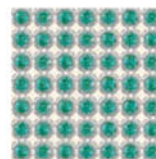
Blue Zircon F (229)



012 Black

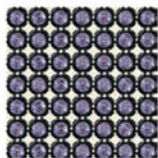


081 Gold

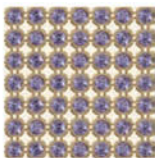


082 Silver

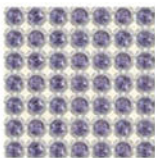
Tanzanite F (539)



012 Black

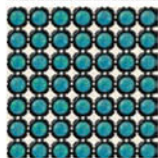


081 Gold

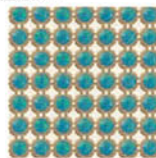


082 Silver

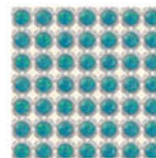
Caribbean Blue Opal F (394)



012 Black

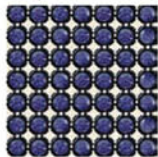


081 Gold

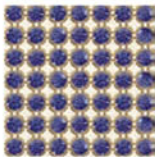


082 Silver

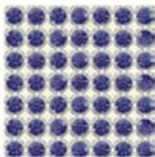
Purple Velvet F (277)



012 Black

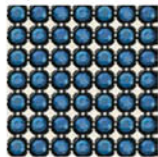


081 Gold

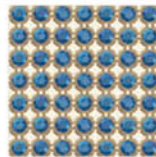


082 Silver

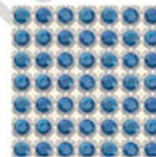
Crystal Metallic Blue F (001 METBL)



012 Black



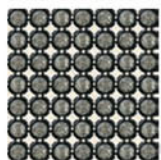
081 Gold



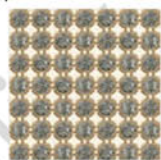
082 Silver



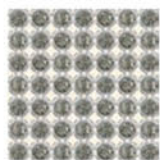
Black Diamond F (215)



012 Black

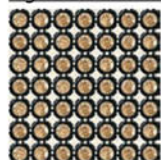


081 Gold



082 Silver

Light Colorado Topaz F (246)



012 Black

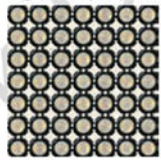


081 Gold



082 Silver

Light Grey Opal F (383)



012 Black

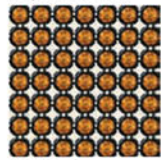


081 Gold

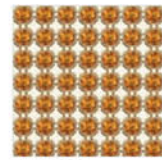


082 Silver

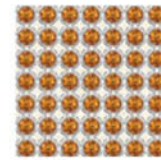
Topaz F (203)



012 Black

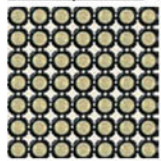


081 Gold

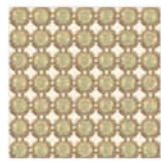


082 Silver

Sand Opal F (287)



012 Black

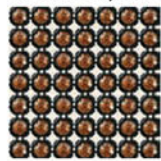


081 Gold

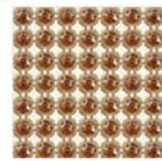


082 Silver

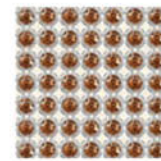
Smoked Topaz F (220)



012 Black

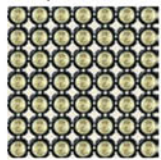


081 Gold

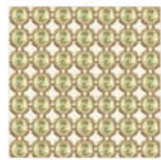


082 Silver

Jonquil F (213)



012 Black

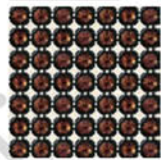


081 Gold

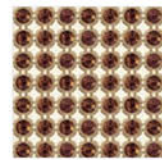


082 Silver

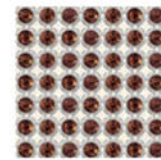
Mocca F (286)



012 Black

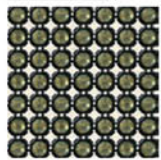


081 Gold

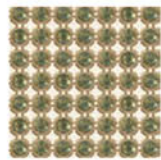


082 Silver

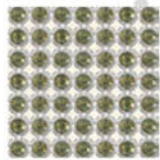
Khaki F (550)



012 Black

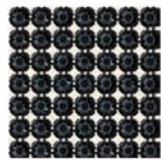


081 Gold

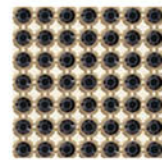


082 Silver

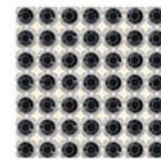
Jet (280)



012 Black

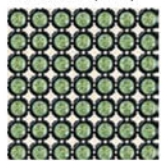


081 Gold

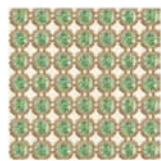


082 Silver

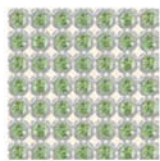
Peridot F (214)



012 Black

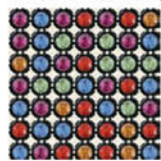


081 Gold

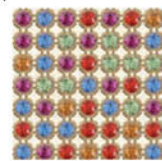


082 Silver

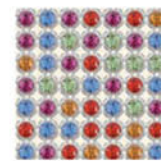
Rainbow Multi F (909)



012 Black

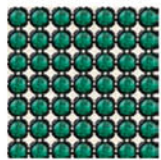


081 Gold

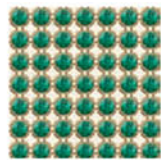


082 Silver

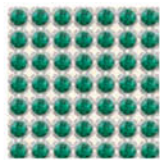
Emerald F (205)



012 Black

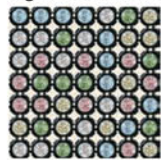


081 Gold

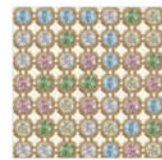


082 Silver

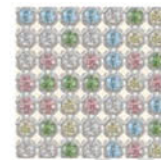
Light Multi F (908)



012 Black

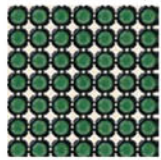


081 Gold

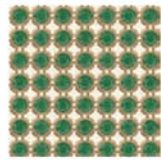


082 Silver

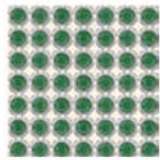
Palace Green Opal F (393)



012 Black



081 Gold



082 Silver

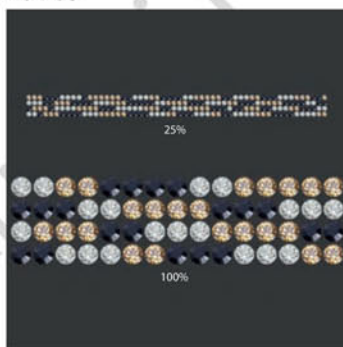
Klasiskās Krāsas / Ekskluzīvās Krāsas

462

Artikulu Skaidrojums

<<<

40 703



C 012-280HEM/246/001  
 E PP21/PP21/PP21  
 S ~159x12  
 M 48 gab.

40 907

07



C 082-001/280  
 E SS24/SS24  
 S ~257x41  
 M 5 gab. 16%

40 703	C	E	S	M	25%, 100%	
Artikuls	Krāsu assortiments	Elementi	Motīva izmērs mm	Minimālais pasūtījuma daudzums gabalos (gab.)	Attēlošanas izmērs %	
	<p>Ietvara krāsa (012) ir atdalīta no kristālu krāsām ar domuzīmi. Krāsas kods 1 (280HEM) atbilst 1. elementam (PP21); krāsas kods 2 (246) atbilst 2. elementam (PP21) utt.</p> <p>Detalizētai informācijai skatīt Konusveida Akmeņu krāsu pārskatu šīs Kolekcijas sākumā.</p>	<p>Kristāla Standarta Siets un Metāliskais Siets (PP21), Kristāla Siets XL (SS24), Kristāla Pērļu Siets (P2.7) un Kristāla Gaisīgais Siets (PP14)</p> <p>Detalizētai informācijai skatīt Konusveida Akmeņu krāsu pārskatu šīs Kolekcijas beigās.</p>			<p>25%: motīva kopskats                      100%: palielināts segmenta attēls</p>	
40 907	C	E	S	M	07	16%
Artikuls	Krāsu assortiments	Elementi	Motīva izmērs mm	Minimālais pasūtījuma daudzums gabalos (gab.)	Šis produkts ir attēlots 7. karogā.	Attēlošanas izmērs %
	<p>Ietvara krāsa (082) ir atdalīta no kristālu krāsām ar domuzīmi. Krāsas kods 1 (001) atbilst 1. elementam (SS24); krāsas kods 2 (280) atbilst 2. elementam (SS24) utt.</p> <p>Detalizētai informācijai skatīt Konusveida Akmeņu krāsu pārskatu šīs Kolekcijas sākumā.</p>	<p>Kristāla Standarta Siets un Metāliskais Siets (PP21), Kristāla Siets XL (SS24), Kristāla Pērļu Siets (P2.7) un Kristāla Gaisīgais Siets</p> <p>Detalizētai informācijai skatīt Konusveida Akmeņu krāsu pārskatu šīs Kolekcijas beigās.</p>				

kristali.lv

## Pasūtīšanas Paraugš &amp; Produkta Daudzveidības Skaidrojums

&lt;&lt;&lt;

40 703	012	280 HEM	246	001
Artikuls	letvara krāsa	Kristāla krāsa, kas atbilst 1. elementam; visbiežāk motivā izmantotā elementa krāsa.	Kristāla krāsa, kas atbilst 2. elementam; otrā visbiežāk motivā izmantotā elementa krāsa.	Kristāla krāsa, kas atbilst 3. elementam; trešā visbiežāk motivā izmantotā elementa krāsa.
	011 Nougat*			
	012 Black*			
	014 Platinum*			
	081 Gold**			
	082 Silver**	Skatīt attiecīgo produkta matricu visu pieejamo kodu uzziņai.		
40 907	082	001	280	
Artikuls	letvara krāsa	Kristāla krāsa, kas atbilst 1. elementam; visbiežāk motivā izmantotā elementa krāsa.	Kristāla krāsa, kas atbilst 2. elementam; otrā visbiežāk motivā izmantotā elementa krāsa.	
	011 Nougat*			
	012 Black*			
	014 Platinum*			
	081 Gold**			
	082 Silver**	Skatīt attiecīgo produkta matricu visu pieejamo kodu uzziņai.		

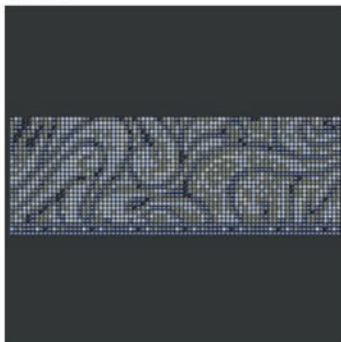
\* Alu (alumiņijs): 011 Nougat, 012 Black, 014 Platinum

\*\*Brass (misiņš): 081 Gold, 082 Silver



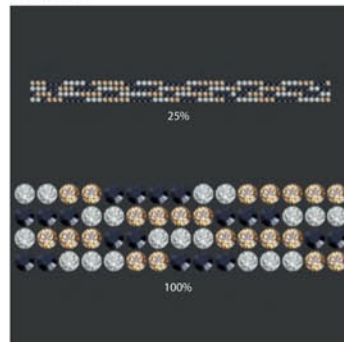
Standarta Kolekcija

40 702



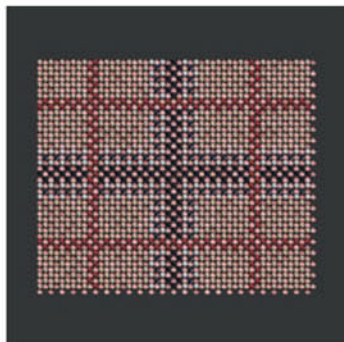
C	012-215/001METBL/211/001/280HEM
E	PP21/PP21/PP21/PP21/PP21
S	~230x82
M	4 gab. 19%

40 703



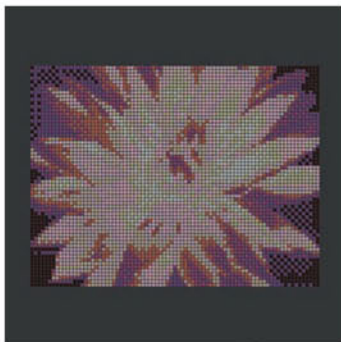
C	012-280HEM/246/001
E	PP21/PP21/PP21
S	~159x12
M	48 gab.

40 704



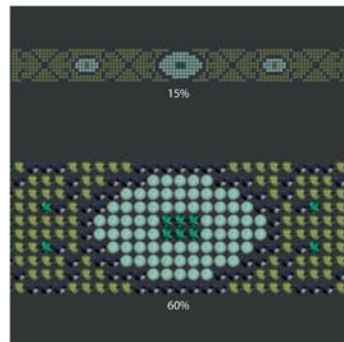
C	011-246/227/001/280/280HEM
E	PP21/PP21/PP21/PP21/PP21
S	~147x124
M	3 gab. 25%

40 705



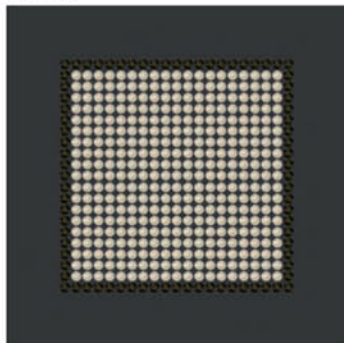
C	012-223/212/001GSHA/213/502/542/204/286/001
E	PP21/.../PP21
S	~239x183
M	2 gab. 16%

40 708



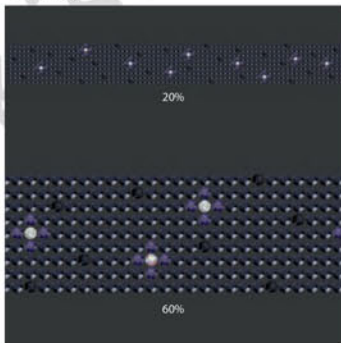
C	012-550/280HEM/390/205
E	PP21/PP21/PP21/PP21
S	~298x29
M	6 gab.

40 709



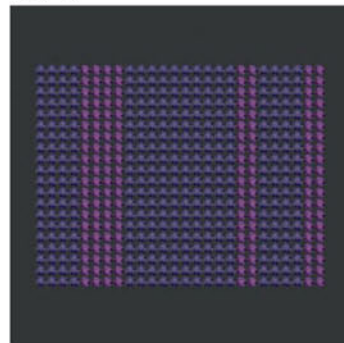
C	012-383/280NUT
E	PP21/PP21
S	~62x62
M	24 gab. 50%

40 710



C	012-280HEM/277/280/001/001AB
E	PP21/PP21/PP21/PP21/PP21
S	~221x26
M	14 gab.

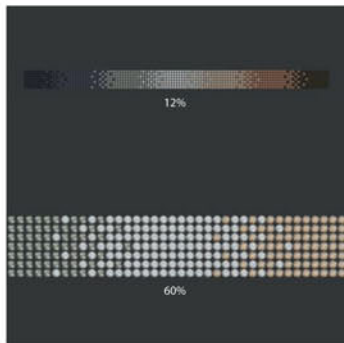
40 717



C	081-277/204
E	PP21/PP21
S	~76x59
M	18 gab. 50%

40 722

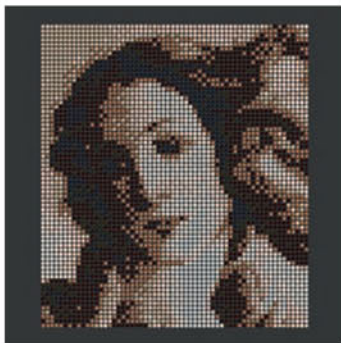
02



C	081-001GSHA/280HEM/001/220/215/280NUT/280
E	PP21/PP21/PP21/PP21/PP21/PP21/PP21
S	~336x20
M	9 gab.

40 724

02



C	012-286/246/391/362/001COP/220/001/280/280NUT
E	PP21/.../PP21
S	~200x177
M	2 gab. 20%

40 725

02



C	011-204/001/390/502/393/208/246
E	PP21/PP21/PP21/PP21/PP21/PP21/PP21
S	~254x62
M	3 gab. 17%

# Kristāla Siets

# Motīvi

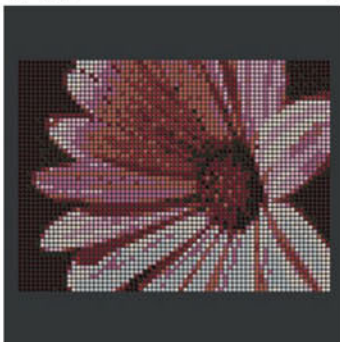
# Standarta Kolekcija

40 726 02



C 082-223/001/395/001DOR/542/550/203/390  
E PP21/.../PP21  
S ~253x97  
M 2 gab. 17%

40 727 02



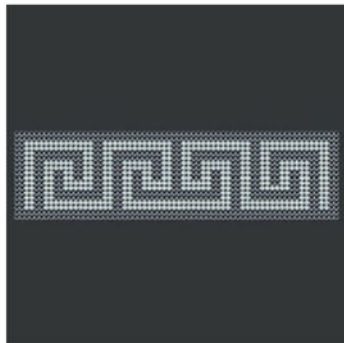
C 012-286/542/208/223/209/227/391/001/  
280NUT  
E PP21/.../PP21  
S ~206x153  
M 2 gab. 20%

40 728 05



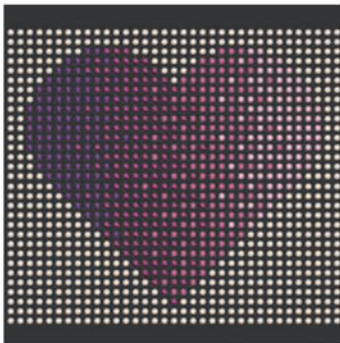
C 012-391/394/202/280HEM  
E PP14/PP14/PP14/PP14  
S ~103x91  
M 8 gab. 42%

40 729 05



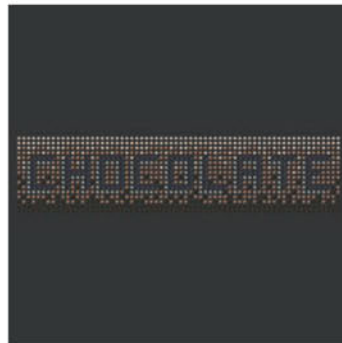
C 082-280/001MOL  
E PP14/PP14  
S ~195x53  
M 6 gab. 22%

40 730 05



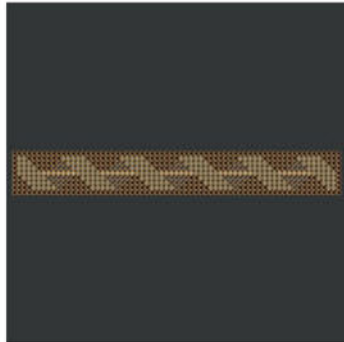
C 012-391/502/209/204/223  
E PP14/PP14/PP14/PP14/PP14  
S ~103x91  
M 8 gab. 43%

40 731 05



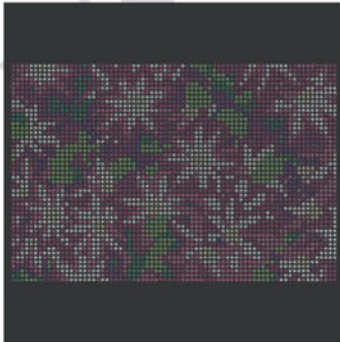
C 012-001COP/001GSHA/280NUT/280HEM/  
215  
E PP14/PP14/PP14/PP14/PP14  
S ~195x47  
M 8 gab. 22%

40 732 05



C 081-286/215/280HEM/001GSHA  
E PP14/PP14/PP14/PP14  
S ~198x27  
M 14 gab. 22%

40 733 05



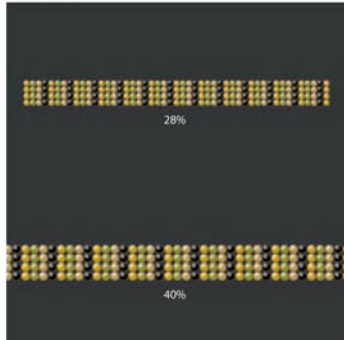
C 012-502/001/209/204/214/205/213  
E PP14/PP14/PP14/PP14/PP14/PP14/PP14  
S ~215x145  
M 2 gab. 20%

40 802



C 082-001/280/229  
E P2.7/P2.7/P2.7  
S ~144x23  
M 24 gab. 28%

40 803



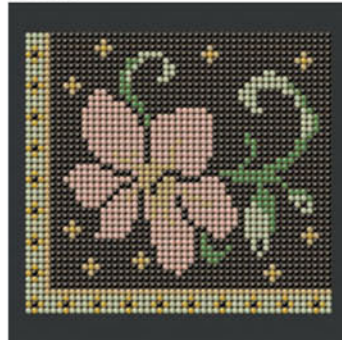
C 081-213/361/280/001  
E P2.7/P2.7/P2.7/P2.7  
S ~144x12  
M 48 gab.

40 804



C 012-001/213/280  
E P2.7/P2.7/P2.7  
S ~145x44  
M 12 gab. 28%

40 805



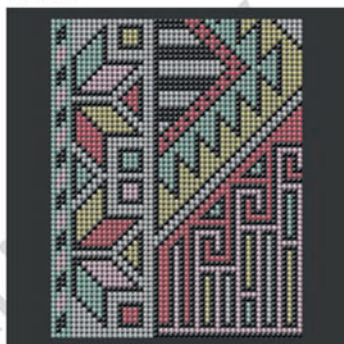
C 081-280/212/240/001/229/213  
E P2.7/P2.7/P2.7/P2.7/P2.7/P2.7  
S ~144x132  
M 3 gab. 28%

# Kristāla Siets

# Motīvi

# Standarta Kolekcija

40 806



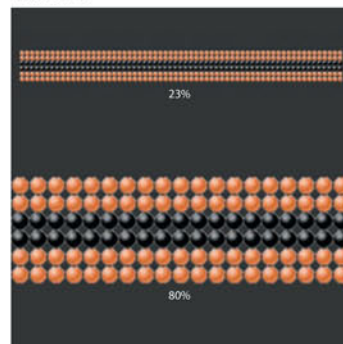
C 082-280/001/361/212/227/213  
E P2.7/P2.7/P2.7/P2.7/P2.7/P2.7  
S ~144x183  
M 3 gab. 23%

40 807



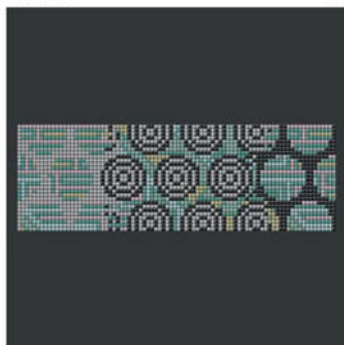
C 082-280/203/229/213  
E P2.7/P2.7/P2.7/P2.7  
S ~124x20  
M 36 gab. 35%

40 808



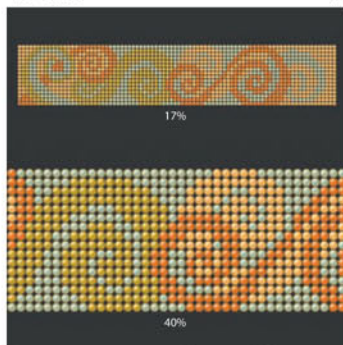
C 082-203/280  
E P2.7/P2.7  
S ~186x17  
M 22 gab.

40 817



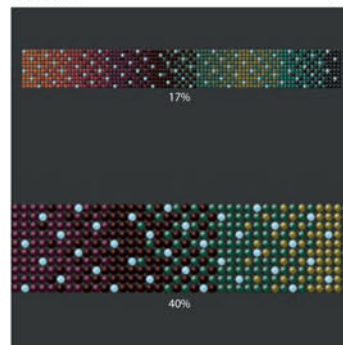
C 082-001/229/280/212/280/240/361/213  
E P2.7/P2.7/P2.7/P2.7/P2.7/P2.7/P2.7  
S ~248x83  
M 4 gab. 17%

40 818



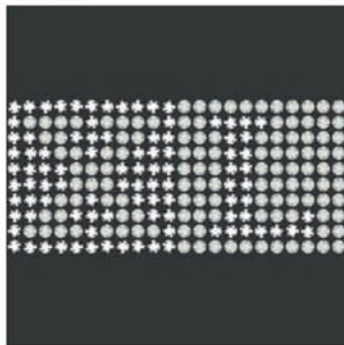
C 081-240/391/203/213  
E P2.7/P2.7/P2.7/P2.7  
S ~248x47  
M 8 gab.

40 819



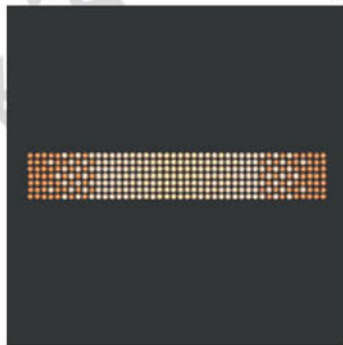
C 012-361/229/391/223/227/213/234/203/  
280  
E P2.7/.../P2.7  
S ~248x29  
M 12 gab.

40 902



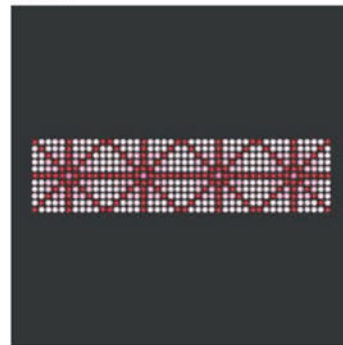
C 012-001SSHA/280HEM  
E SS24/SS24  
S ~131x59  
M 9 gab. 34%

40 903



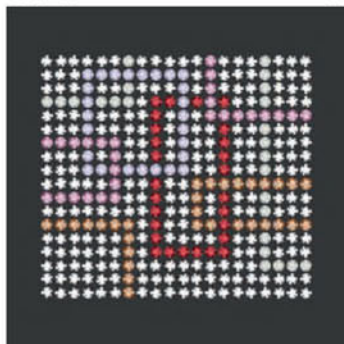
C 081-246/001COP/001GSHA  
E SS24/SS24/SS24  
S ~263x41  
M 5 gab. 15%

40 904



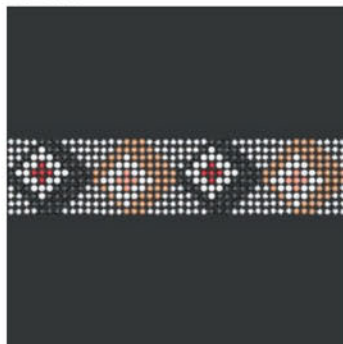
C 082-223/208/209/502  
E SS24/SS24/SS24/SS24  
S ~263x65  
M 3 gab. 15%

40 905



C 081-280HEM/220/208/204/539/001SSHA  
E SS24/SS24/SS24/SS24/SS24/SS24  
S ~119x107  
M 8 gab. 30%

40 906



C 012-280HEM/280/220/001/001/208/542  
E SS24/SS24/SS24/SS24/SS24/SS24  
S ~263x59  
M 3 gab. 17%

40 907



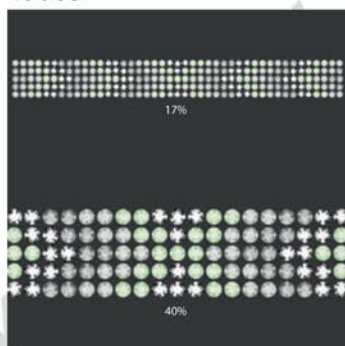
C 082-001/280  
E SS24/SS24  
S ~257x41  
M 5 gab. 17%

# Kristāla Siets

# Motīvi

# Modes Kolekcijas

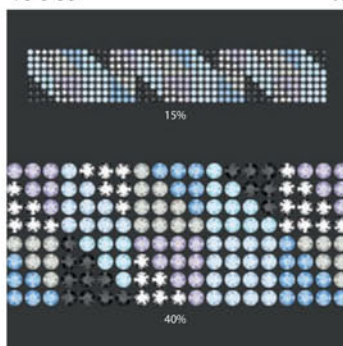
40 908



C	082-001SSHA/214/215/280HEM
E	SS24/SS24/SS24/SS24
S	~257x29
M	7 gab.

40 909

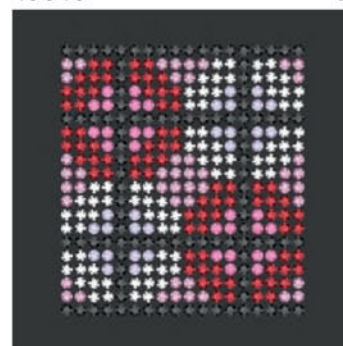
07



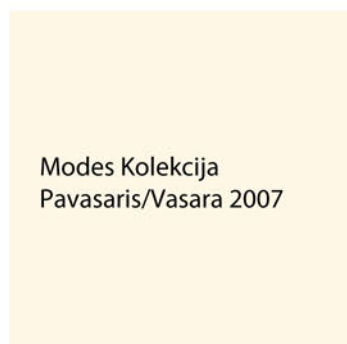
C	012-211/280HEM/202/280/001SSHA/539/206
E	SS24/SS24/SS24/SS24/SS24/SS24/SS24
S	~263x47
M	4 gab.

40 910

07

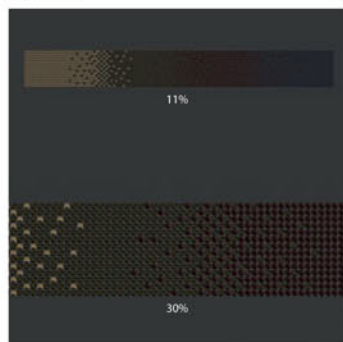


C	012-280/208/280HEM/204/539/502
E	SS24/SS24/SS24/SS24/SS24
S	~107x119
M	4 gab. 30%



40 711\*

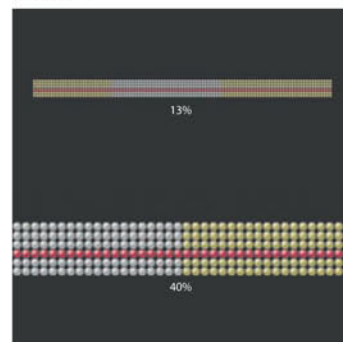
15



C	012-280NUT/280/001DOR/286
E	PP21/PP21/PP21/PP21
S	~371x44
M	4 gab.

40 809\*

12



C	082-213/001/227
E	P2.7/P2.7/P2.7
S	~304x17
M	11 gab.

40 810\*

18

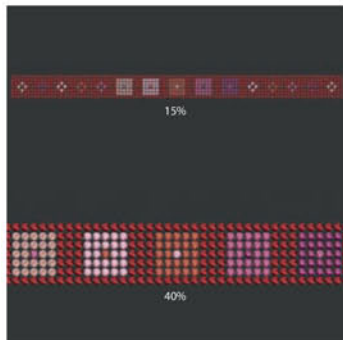


C	082-280/240/001/223/229/203/213
E	P2.7/P2.7/P2.7/P2.7/P2.7/P2.7/P2.7
S	~132x191
M	3 gab. 20%



40 716\*

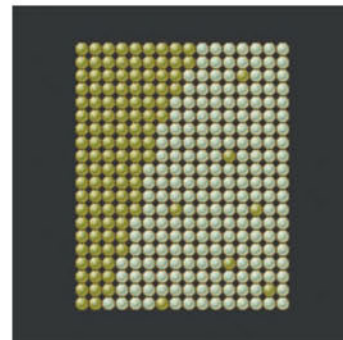
15



C	082-227/209/502/223/542/319
E	PP21/PP21/PP21/PP21/PP21/PP21
S	~298x20
M	9 gab.

40 718\*

12



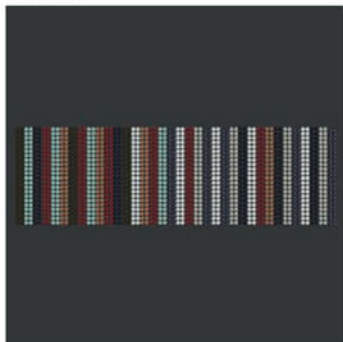
C	081-240/361
E	P2.7/P2.7
S	~47x59
M	30 gab. 60%

\*Motīvu 40711 kādreiz bija 111412, 40809 kādreiz bija 115148, 40810 kādreiz bija 115153, 40716 kādreiz bija 111624 un 40718 kādreiz bija 115163.



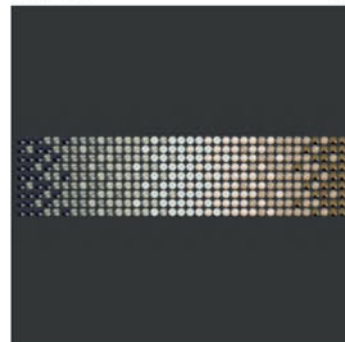
Modes Kolekcija  
Pavasaris/Vasara 2008

40 712\* 13



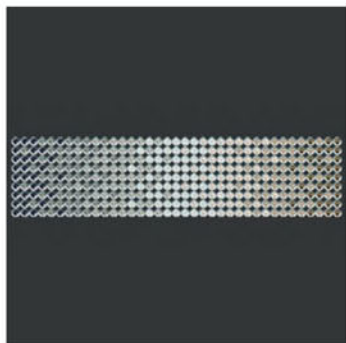
C	012-208/001MOL/280HEM/280/001COP/390/001SSHA/280NUT	
E	PP21/.../PP21	
S	~212x65	
M	6 gab.	20%

40 713\* 04

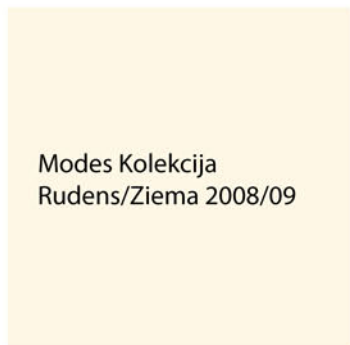


C	082-001SSHA/001MOL/215/391/001GSHA/280HEM/001DOR	
E	PP21/PP21/PP21/PP21/PP21/PP21/PP21	
S	~109x26	
M	28 gab.	40%

40 714\* 04

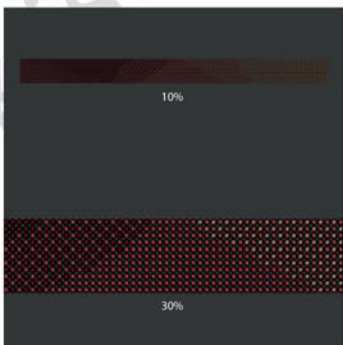


C	082-001SSHA/001MOL/215/391/001GSHA/280HEM/001DOR	
E	PP14/PP14/PP14/PP14/PP14/PP14/PP14	
S	~109x27	
M	28 gab.	40%



Modes Kolekcija  
Rudens/Ziema 2008/09

40 715\* 05

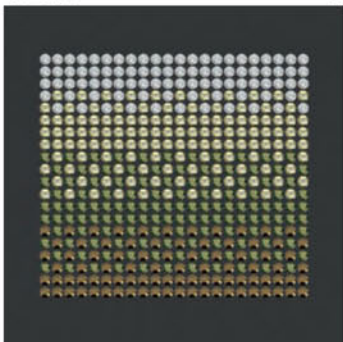


C	012-227/396/001COP/203/208	
E	PP14/PP14/PP14/PP14/PP14	
S	~407x32	
M	6 gab.	



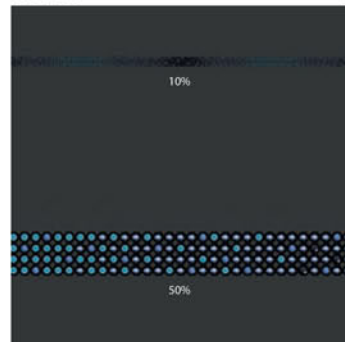
Modes Kolekcija  
Pavasaris/Vasara 2009

40 719\* 04



C	082-213/550/001/001DOR	
E	PP21/PP21/PP21/PP21	
S	~65x59	
M	21 gab.	55%

40 720\* 12



C	012-001METBL/394/280HEM/206/280	
E	PP14/PP14/PP14/PP14/PP14	
S	~251x12	
M	32 gab.	

\*Motivs 40712 kādreiz bija 111783, 40713 kādreiz bija 111850, 40714 kādreiz bija 118009, 40715 kādreiz bija 118055, 40719 kādreiz bija 112458 un 40720 kādreiz bija 118291.



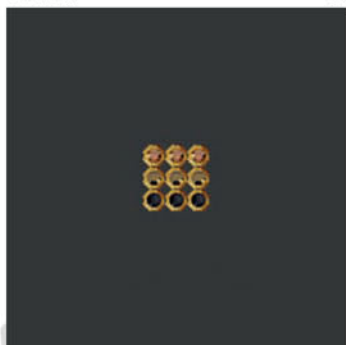
# Kristāla Siets

# Motīvi

# Speciālās Kolekcijas

40 721\*

06



C	081-001DOR/001COP/280
E	PP14/PP14/PP14
S	~9x9
M	11.033 M (1,246 gab.)
	100%

40 911\*

03

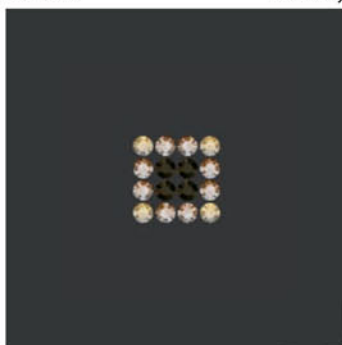


C	012-001/204/280/001GSHA/223
E	SS24/SS24/SS24/SS24/SS24
S	~245x41
M	10 gab.
	17%



40 734\*

Harmony 1

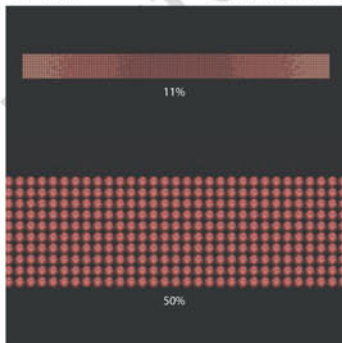


C	081-220SAT/213SAT/280NUT
E	PP21/PP21/PP21
S	~12x12
M	672 gab.
	100%



40 735\*

Passionate Wedding

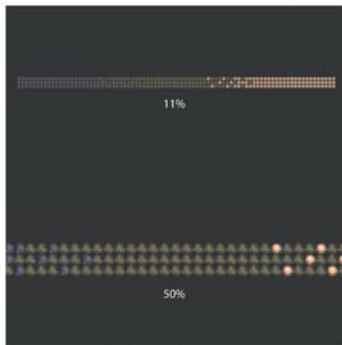


C	012-227/208/542
E	PP21/PP21/PP21
S	~368x29
M	6 gab.



40 736\*

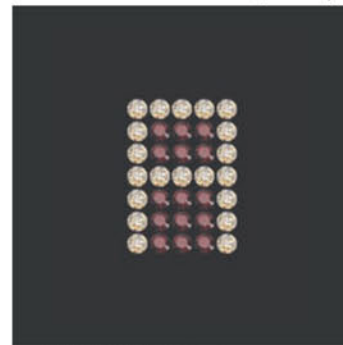
Technical, Timeless



C	012-280NUT/220/280
E	PP21/PP21/PP21
S	~248x9
M	44 gab.

40 737\*

Technical, Contemporary



C	081-001GSHA/515
E	PP21/PP21
S	~14x20
M	306 gab.
	100%

\*Motivs 40721 kādreiz bija 118293, 40911 kādreiz bija 112531, 40734 kādreiz bija 110891, 40735 kādreiz bija 111832, 40736 kādreiz bija 112036 un 40737 kādreiz bija 112080.

Artikuls Izmērs	Iepakojums = Minimālais pasūtījuma daudzums (gab.)	Vidējais NETO svars gramos uz iepakojumu (Alumīnijs)*	Vidējais NETO svars gramos uz iepakojumu (Misiņš)**
40 000 100	1 loksne	290 g	460 g
40 001 002-033	10 metri	8.8 g uz rindu/metru	13.9 g uz rindu/metru
40 100 100	1 loksne	470 g	720 g
40 101 002-018	10 metri	26.1 g uz rindu/metru	40 g uz rindu/metru
40 200 100	1 loksne	190 g	355 g
40 201 002-033	10 metri	5.8 g uz rindu/metru	10.8 g uz rindu/metru
40 300 100	1 loksne	470 g	630 g
40 301 004-033	10 metri	14.2 g uz rindu/metru	19.1 g uz rindu/metru
40 400 100	1 loksne	180 g	350 g
40 401 002-033	10 metri	5.5 g uz rindu/metru	10.6 g uz rindu/metru

\* Alumīnijs: 011 Nougat, 012 Black, 014 Platinum

\*\* Misiņš: 081 Gold, 082 Silver

Īpašais motīvs ir individuāls, klienta paša radīts dizains, kurš atšķiras no Kristāla Sieta

Standarta vai Modes kolekciju dizaina. Šis pakalpojums paver daudz pielāgošanas iespēju. Nav nepieciešams pašrocīgi veidot motīvu. Jūs varat paļauties uz Swarovski ilgtermiņa pieredzi un zināšanām dizaina jomā un pasūtīt piemērotu dizainu, jau gatavu lietošanai. Pastāv virkne pielāgošanas iespēju jau eksistējošiem motīviem (skatīt «Pielāgošanas iespējas» zemāk). Jūs varat arī iesniegt dizaina, kas atbilst jūsu īpašajām vajadzībām (piemēram, logotipa, apģērba vai attēla kādai reklāmas kampaņai) skices. Tad, pēc jūsu norādījumiem, ar datora palīdzību tiks izveidots aplikācijas makets, kuru būs iespējams koriģēt atbilstoši jūsu vajadzībām.

## Pielāgošanas iespējas

&lt;&lt;&lt;

- Eksistējoša motīva izmēra maiņa
- Logotipi un tirdzniecības zīmes
- Pasūtījumi rindās un gabalos
- Līdz deviņām krāsām/elementiem uz Kristāla Sieta Motīvu iespējams. Pateicoties jaunajam akmenim, pat Kristāla Sieta XL, vienā motīvā iespējams izmantot līdz pat deviņām krāsām.

## Pasūtīšanas Process

&lt;&lt;&lt;

Nogādājiet pieprasījumu kopā ar Jūsu zīmējumu uz KRISTALI.LV ofisu (Tallinas ielā 40/2, Rīgā). Pārliecinieties, ka esat iekļāvuši visus vēlamā motīva parametrus. Lūdzu, norādiet arī, uz kādu produktu grupu dizains attiecas (Kristāla Standarta Siets, Kristāla Siets XL, Metāla Kristāla Siets utml.). Tad Jūs saņemsiet piedāvājumu PDF formātā, kurā būs uzrādīti Jūsu artikulu numuri, minimālais pasūtījuma daudzums, cena, un Jūsu īpašā motīva grafisks attēls. Nepieciešamās izmaiņas Jūs varēsiet saskaņot mūsu birojā. Saņemot galīgo apstiprinājumu no Jums, tiks uzsākta Jūsu īpašā motīva ražošana un piegāde.

## Uzziņai

&lt;&lt;&lt;

Lūdzu, vienmēr iesniedziet Jūsu vēlamā motīva attēlu tādā izmērā, kāds Jums tas būs nepieciešams. Mazai skicei, pēc palielināšanas nepieciešamajā izmērā, būs neskaidras līnijas, kas var apgrūtināt pareizu tās interpretēšanu. Bilde un attēli pilnā izmērā vai ļoti labas kvalitātes skenējumi JPG, BMP vai DXF formātos nodrošinās skaidru informāciju darbam. Tos var arī sūtīt pa e-pastu vai ierakstītus CD-ROM diskā. Ja sūtat izšūšanas rakstu, lūdzu, ietveriet visu rakstu, ne vien fragmentus. Gadījumā, ja sūtat skici kā cieto kopiju pa faksu vai e-pastu, lūdzu ietveriet tajā arī mēroga leģendu (piemēram, kopija/skenējums ar blakus novietotu lineālu). Tas palīdzēs nodrošināt motīva izmēra noteikšanu.

Nemiet vērā, ka vienkāršs dizaina pasūtījums negarantē klientam ekskluzīvu šī dizaina izgatavošanu.